

EDUCATOR'S GUIDE 2024/2025



# DISCOVER



HOUSTON MUSEUM  
*of* NATURAL SCIENCE

# PRICING



## CONTACT US

- Museum** | 713-639-4629 | [educationquestions@hmns.org](mailto:educationquestions@hmns.org)
- Field Trips** | 713-639-4659 | [reservations@hmns.org](mailto:reservations@hmns.org) | [hmns.org/book](http://hmns.org/book)
- Accessibility** | 713-639-4620 | [accessprogramming@hmns.org](mailto:accessprogramming@hmns.org)
- Curriculum** | 713-639-4659 | [curriculum@hmns.org](mailto:curriculum@hmns.org)
- Expedition Center** | 713-639-4727 | [astronomy@hmns.org](mailto:astronomy@hmns.org)
- HMNS @ Sugar Land** | 281-313-2277 x2102 | [sugarlandprograms@hmns.org](mailto:sugarlandprograms@hmns.org)
- George Observatory** | 281-313-2277 x2102 | [observatory@hmns.org](mailto:observatory@hmns.org)
- Outreach Programs** | 713-639-4659 | [reservations@hmns.org](mailto:reservations@hmns.org) | [hmns.org/bookoutreach](http://hmns.org/bookoutreach)
- Student Labs** | 713-639-4659 | [reservations@hmns.org](mailto:reservations@hmns.org) | [hmns.org/booklab](http://hmns.org/booklab)
- Student Overnights** | 713-639-4733 | [overnights@hmns.org](mailto:overnights@hmns.org)
- Scouts @ HMNS** | 713-639-4631 | [scouts@hmns.org](mailto:scouts@hmns.org)
- Girls Exploring Math and Science (GEMS)** | 713-639-4631 | [gems@hmns.org](mailto:gems@hmns.org)
- Summer Camps @ HMNS** | 713-639-4651 | [summercamp@hmns.org](mailto:summercamp@hmns.org)
- Shell Educators' Preview** | 713-639-4659 | [educatorpreview@hmns.org](mailto:educatorpreview@hmns.org)
- Gifted and Talented** | 713-639-4659 | [giftedandtalented@hmns.org](mailto:giftedandtalented@hmns.org)
- Educator Workshops** | 713-639-4659 | [educationquestions@hmns.org](mailto:educationquestions@hmns.org)

### Field Trips | p. 4-5

- \*\*Exhibit Halls | \$4.00
- Burke Baker Planetarium | \$3.50
- Cockrell Butterfly Center | \$5.00
- \*Wortham Giant Screen Theatre | \$6.00
- Special Exhibitions | Call for Pricing

### Tours | p. 15

- \*Docent Tour | \$15.00 per 10 people

### Early Investigations Program | p. 15

- \*\*Exhibit Hall Program | \$9.50
- \*Cockrell Butterfly Center Program | \$10.50

### Expedition Center | p. 11

- Mini-Crew Mission | \$230 | 12-25 students | 1 hour
- Junior-Crew Mission | \$255 | 12-25 students | 1.5 hours
- Full-Crew Mission | \$350 | 20-45 students | 2 hours

### Science Labs | p. 16

- Weekday Labs | \$225 per lab | 1 hour
- Weekday Science Dissection Labs | \$275 per lab | 1 hour
- Labs on Demand | \$275 | 1 hour
- Advanced Labs on Demand | \$550-\$600 | 2 hours
- Travel Fee \$80 for off-site labs

### Educator Workshops | p. 18

- Gifted and Talented
- \$55 Member | \$65 Non-Member
- Teacher Workshops
- FREE Members | \$10 Non-Members
- Educator Late Night
- \$60 Member | \$75 Non-Member

### HMNS @ Sugar Land | p. 12

- Exhibit Halls | \$3.50
- \*Docent Tours | \$15.00 per 10 people
- Weekday Labs | \$225 per lab | 1 hour
- Weekday Science Dissection Labs | \$275 per lab | 1 hour
- Labs on Demand | \$275 | 1 hour
- Advanced Labs on Demand | \$500 - \$600 | 2 hours
- Special Exhibitions | Call for pricing

- \*Subject to availability.
- \*\*Temporary Hall Closures
- Virtual programming options and pricing available online.

### George Observatory | p. 13

- \*Astronomy Day Class | \$165 | 1 hour
- \*Expedition Center Missions
- Mini-Crew Mission | \$230 | 8-18 students | 1 hour
- Junior-Crew Mission | \$230 | 8-12 students | 1.5 hours
- Full-Crew Mission | \$350 | 16-36 students | 2 hours
- \*Discovery Dome | \$3.00 per person | 12-14 students

### Outreach Programs | p. 14

- Bugs on Wheels
- \$425 Half day | \$525 Full day | \$625 Extended day
- Discovery Dome
- \$425 Half day | \$525 Full day | \$625 Extended day
- Docents to Go | \$150
- Earth Science on Wheels
- \$425 Half day | \$525 Full day | \$625 Extended day
- ConocoPhillips Science on Stage
- \$425 First presentation
- \$150 per additional presentation
- Wildlife on Wheels
- \$425 Half day | \$525 Full day | \$625 Extended day
- Science Start
- \$425 First presentation pair
- \$150 per additional presentation pair
- Science Nights | Call for Pricing
- Museum Careers | \$150



# HMNS FIELDTRIPS



## Field Trips

The Houston Museum of Natural Science works hard to help teachers bring learning to life. Booking a Field Trip is the first step in creating lifelong learners.

## Reservations

Field Trip reservations may be made by calling 713-639-4659, or by completing the online form at [hmns.org/book](https://hmns.org/book)

### To receive the discounted Field Trip rate:

- Belong to an educational organization; grades Pre-K-12
- Visit us Monday–Saturday, 9 a.m.–5 p.m.
- Have a minimum of 10 students.
- Chaperones must be at least 21 years of age.
- Make reservations in advance.

For more detailed Field Trip policies, please visit us at [hmns.org/fieldtrips](https://hmns.org/fieldtrips).

## Payments

Every Field Trip must pay for a minimum of 10 students. Payment is due upon arrival to the Museum. Field Trip rates are already discounted; no additional coupons or membership discounts apply at any of the HMNS locations. To view specific pricing information, see our pricing on page 3 or visit [hmns.org/fieldtrips](https://hmns.org/fieldtrips).

## Museum Etiquette

To ensure that all Museum visitors have an optimal experience and out of respect for our collections and the safety of others, we ask that all HMNS patrons adhere to the following guidelines:



- Follow all of HMNS current Health and Safety Procedures for Field Trips.
- Keep your hands and feet to yourself.
- Keep a safe distance from objects, walls, cases, artifacts, and photographs. The oils, salts, and acids in our sweat can damage works of art and artifacts. (Touching of exhibits is only permitted in the Morian Cabinet of Curiosities.)
- Be respectful of Museum Staff, other school groups, and visitors to the Museum – this includes but not limited to:
  - Being considerate when speaking to Museum Staff.
  - Using a quiet voice when walking through the halls.
  - Not using profanity or derogatory language.
- Cell phones must be silenced while in the halls and theatres.
- Food, drinks, and chewing gum are not allowed in the halls.
- Students are not permitted to run or jump in the halls.
- When visiting the Morian Overlook, please do not allow students to drop objects over the balcony into the Morian Hall of Paleontology.
- Please refrain from blocking exit and/or entryways throughout the Museum.
- While viewing exhibits, please allow space for other patrons to safely pass.

Teachers and chaperones are responsible for the behavior of their students/children during their visit to the Museum. We thank you in advance for ensuring that our Museum remains in good condition for all visitors to enjoy.

**If these guidelines are not followed, you may be asked to leave the Museum without a refund.**

## Field Trip Curriculum

Our team of educators has produced Field Trip curriculum, for grades K-12. Based on each grade's interdisciplinary TEKS objectives, this curriculum covers the Museum's Permanent Exhibit Halls and special exhibitions. All curricula are available online for free at [hmns.org/curriculum](https://hmns.org/curriculum).

## Aramco iExplore Biodiversity Field Trip Package

The Aramco iExplore: Biodiversity field trip package utilizes the Museum's engaging halls and demonstrations to educate students about biodiversity and related TEKS objectives. The package includes a guided tour of the Cockrell Butterfly Center, the Brown Hall of Entomology, and a Rainforest Wildlife live-animal presentation. An Aramco iExplore: Biodiversity curriculum is also available, empowering student groups to take a self-guided tour of the Museum while incorporating many of the program's interactive and educational benefits. Free digital classroom resources are additionally available for participating groups, further enhancing the flexibility of the Aramco iExplore learning experience. Please email [reservations@hmns.org](mailto:reservations@hmns.org) for pricing.



## Accessibility

The HMNS staff is dedicated to ensuring that all our visitors have the best day possible! If any students or adults in your group have a disability, please inform us when booking your Field Trip so that we can make any requested accommodations to the best of our ability.

We are excited to offer resources for those with sensory sensitivities and those affected by autism spectrum disorders. Before coming to the Museum, download and review our Sensory Guides, Access HMNS app, Exploration Planner, and other resources available at [hmns.org/accessibility](https://hmns.org/accessibility).

For more information or to find out which exhibits might work best for you and your group, please visit [hmns.org/accessibility](https://hmns.org/accessibility), call our Museum Services Desk at 713-639-4601, or email [accessprogramming@hmns.org](mailto:accessprogramming@hmns.org).

## Sensory Friendly Events

*Supported by The Joan and Stanford Alexander Family Fund*

HMNS hosts **Sensory Friendly Events** throughout the year at both our Hermann Park and Sugar Land locations. The exhibit halls and shows will have adjusted lighting and volume for all to enjoy.

Events at our Hermann Park location will take place in September and April from 8:00 am - 10:00 am. Events at our Sugar Land location will take place in October, January, and May from 9:00 am - 10:00 am.

As additional support for your students, HMNS also offers an all-day event at our Hermann Park location, **Sensory Friendly Day for Schools**, that will be held in, December from 9:00 am – 5:00 pm. A perfect day to book a field trip to the museum for those who have sensory sensitivities.

# PERMANENT EXHIBITIONS

# PERMANENT EXHIBITIONS

The Houston Museum of Natural Science's Permanent Exhibit Halls offer a unique assortment of interdisciplinary adventures for students of all ages. For more information about our newest Special Exhibitions, visit at [hmns.org/special-exhibitions](http://hmns.org/special-exhibitions).



Morian Hall of Paleontology



Vintage Texas Wildlife Dioramas



Farish Hall of Texas Wildlife



Morian Cabinet of Curiosities



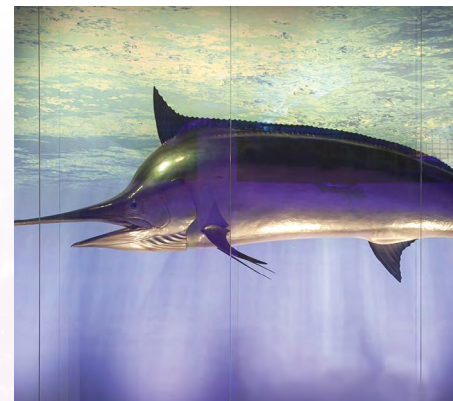
Frensey/Graham Hall of African Wildlife



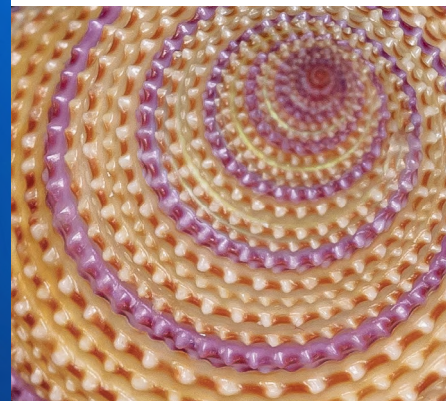
Cullen Hall of Gems and Minerals



The Albert and Ethel Herzstein Foucault Pendulum



Alfred C. Glassell, Jr. Hall



George W. Strake Hall of Malacology



Wiess Energy Hall



Welch Hall: Matter & Motion

Presented by the Ting Tsung and Wei Fong Chao Foundation



The Lester and Sue Smith Gem Vault



Hamman Hall of Texas Coastal Ecology



Lower Education Wing



John P. McGovern Hall of The Americas



Hall of Ancient Egypt



Arnold Space Hall

Generously supported by Apache Corporation and Paula and Rusty Walter

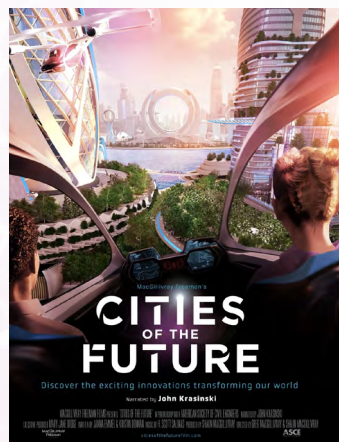
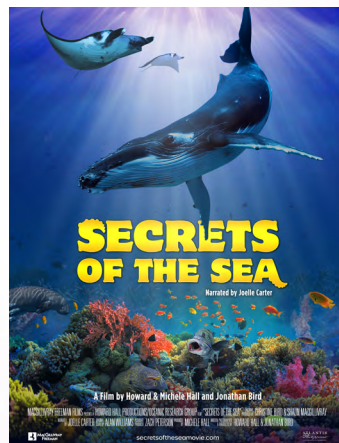
# WORTHAM

## GIANT SCREEN THEATRE

### Films That Inspire Lifelong Learning

The **Wortham Giant Screen Theatre** features the latest in state-of-the-art motion picture projection. In stunning 4K digital with advanced technology, students can immerse themselves in the depths of the ocean, the heat of volcanoes, or fly across the rainforest canopy, all projected onto a giant screen.

Watch our film trailers and find a full list of our featured films online at [hmns.org/giantscreen!](http://hmns.org/giantscreen)

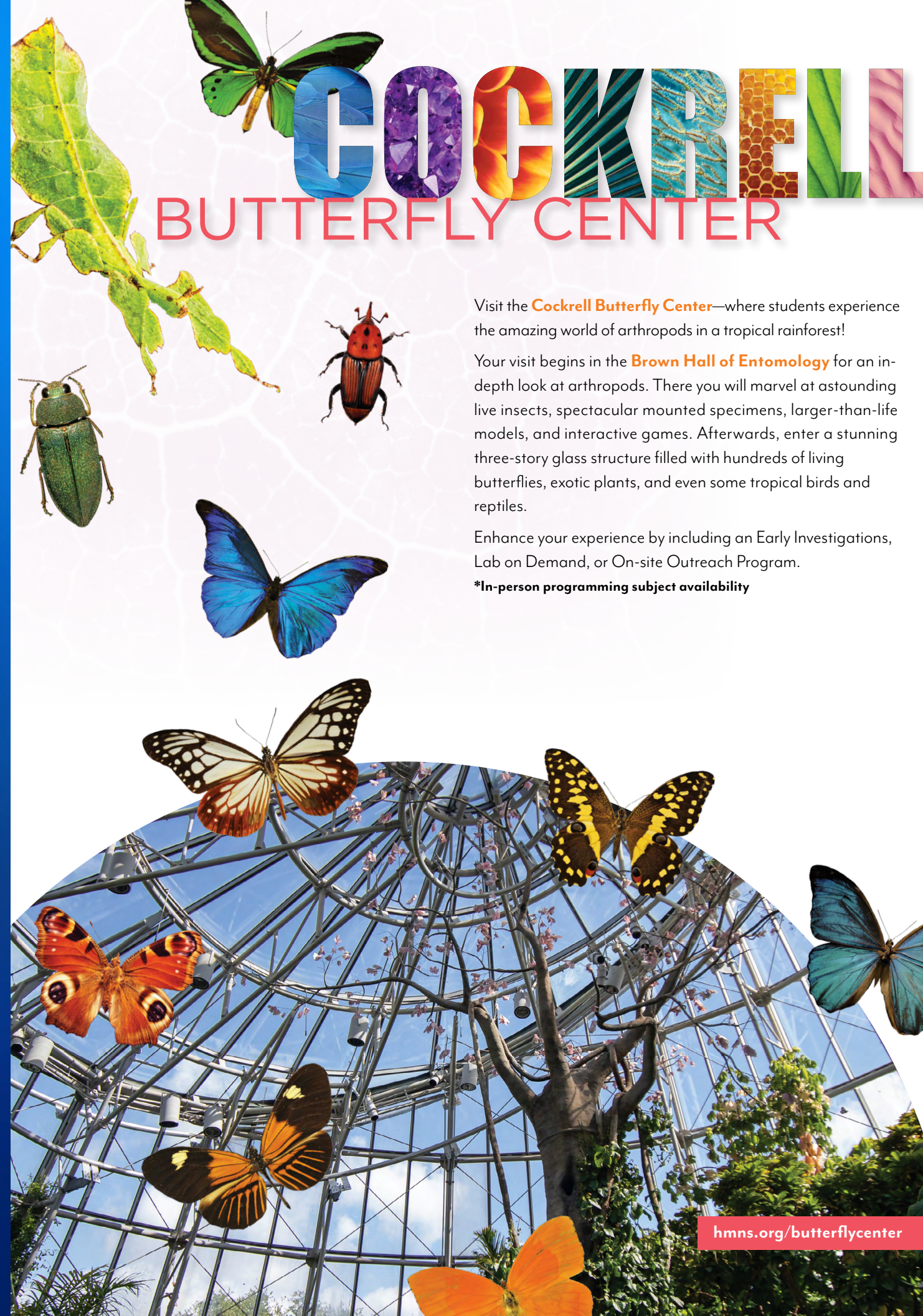


### Teacher's Choice

**Teacher's Choice** allows educators to change the film playing at the 10:00 am, 11:00 am, or 12:00 pm time slots. Reservations must be made at least five business days in advance and are on a first-come, first-served basis. Films are available in 2D and 3D. Most films have closed captioning and online education resources available.



[hmns.org/giantscreen](http://hmns.org/giantscreen)



# COCKRELL

## BUTTERFLY CENTER

Visit the **Cockrell Butterfly Center**—where students experience the amazing world of arthropods in a tropical rainforest!

Your visit begins in the **Brown Hall of Entomology** for an in-depth look at arthropods. There you will marvel at astounding live insects, spectacular mounted specimens, larger-than-life models, and interactive games. Afterwards, enter a stunning three-story glass structure filled with hundreds of living butterflies, exotic plants, and even some tropical birds and reptiles.

Enhance your experience by including an Early Investigations, Lab on Demand, or On-site Outreach Program.

**\*In-person programming subject availability**

[hmns.org/butterflycenter](http://hmns.org/butterflycenter)

# BURKE BAKER PLANETARIUM

Pick your destination and leave the Earth behind! Choose from a live interactive TEKS-based show or select a film to suit your grade and topic from our incredible collection of dynamic planetarium shows in the **Friedkin Theatre** underneath the **Radoff Dome**.

## Planetarium Picks for Educators

Now the whole Universe is yours - just book 25 or more students, and then you can choose your showing and viewing time. Shows are available every half hour from 10:30 a.m. to 3:30 p.m. on weekdays.

Reserve early as seating is limited.

You can view which shows are currently available online at [hmns.org/planetarium-picks](http://hmns.org/planetarium-picks).



[hmns.org/planetarium](http://hmns.org/planetarium)



# EXPEDITION CENTER

The Expedition Center is a unique team problem-solving simulator. During missions, teams receive tasks and students must work together to reach their destination on the red planet, Mars. Meanwhile Mission Controllers monitor their progress and help when needed, especially in emergencies. It's a dramatic, high energy, completely interactive group experience where the students are in charge. When they succeed in reaching their destination, it is met with pride and applause!

Houston provides career opportunities in medicine, technology, engineering, and space, as well as the biological and geological sciences. During each Expedition, students model these real world careers as they explore the surface of Mars. Our Expeditions also emphasize the skills that make good students and valuable employees: responsibility, teamwork, decision-making, and communication. All Expeditions include free admission to the Museum's Permanent Exhibit Halls—excluding special exhibitions.

## Expedition Center Programs

### MISSION SPACE

It is the year 2076; this mission must be successful, and only your students can make it happen. New Tranquility Base on the Moon is awaiting the arrival of your space ship from Earth for a crew exchange before journeying to Mars. Students must work together to complete a successful Expedition while performing experiments, maintaining the ship, and surviving the perils of space travel.

### MISSION DEEP DIVE

Students in a submarine and on a surface ship chart the path of the iceberg that sank the legendary RMS Titanic. Their mission ends with an exploration of the wreck site for new clues about what sank the unsinkable ship. In the second deep-sea challenge, students in the ship and submarine head for a deep water coral reef in the Azores. There, a treasure laden galleon sank over 400 years ago and has never been found. The treasure still lies somewhere on the ocean floor.

These Expeditions are available for students of most age groups. You can schedule an Expedition for your students Monday–Saturday, 9 a.m.–3 p.m.

### Mini-Crew Expedition | 1 hour

12–25 students; Grades 4–12

### Junior-Crew Expedition | 1.5 hours

12–25 students;  
Kindergarten–Grade 3

### Full-Crew Expedition | 2 hours

24–44 students; Grades 4–12

**\*Program is subject to availability and some grades require a minimum amount of adults per student during the mission.**

## Staff Development/Team Building

For an exceptional staff development or team building activity, book an Expedition for your teaching staff.

Contact [expedition@hmns.org](mailto:expedition@hmns.org).

## Discounts

Science, math, and engineering classes or clubs in high school may qualify for a free Expedition, sponsored by the JSC Chapter of the NASA Alumni League.

Contact [expedition@hmns.org](mailto:expedition@hmns.org).



[hmns.org/space](http://hmns.org/space)

# HMNS AT SUGAR LAND

# GEORGE OBSERVATORY



Located in a historic building in Sugar Land, our satellite campus is the perfect venue for a Field Trip.

## Field Trips

The museum is home to a full-size Science on a Sphere and an outdoor pollinator garden. The Permanent Exhibit Halls, featuring items from the HMNS collection, cover Earth, Technology, Space, and Physical Sciences, along with Paleontology. Seasonal special exhibitions are also scheduled throughout the year. Information about these programs and more may be found at [hmns.org/sugarland](https://hmns.org/sugarland).

## Enhanced Experience

Customize your Field Trip by requesting an Enhanced Experience with a docent. Students can also search the native Texas plants in the pollinator garden for caterpillars or chrysalises, schedule a special hands-on experience in the dig pit, explore secrets hidden under their feet in Earth Science, or learn some "life lessons" by scheduling an interactive Nature Program.

## Science Labs

Labs Classes are unique additions to enhance your Field Trips at HMNS at Sugar Land. Students can learn topics from history to landforms and even take part in a lab dissection.

Visit [hmns.org/sugarlandlabs](https://hmns.org/sugarlandlabs) for additional information.

A two-week notice is required to schedule all lab classes.

To book a field trip to our Sugar Land location, fill out your booking form online at [hmns.org/book](https://hmns.org/book).

## George Observatory

Located in beautiful Brazos Bend State Park, the George Observatory offers a wide array of activities such as the Expedition Center Program, Astronomy classes, and more! Be sure to keep track of what's happening at [hmns.org/observatory](https://hmns.org/observatory).

## Expedition Center Programs at the George Observatory

The George Observatory's Expedition Center is a simulation of Mission Control and a Space Station, where students learn how to work together to complete their mission to the Moon and/or Mars. Their goal is to establish a base, by searching both planets to find building materials, and to create permanent working and living quarters.

The astronauts will also have to find some way to sustain themselves by growing plants, recycling water and creating oxygen. Participants transform into scientists, doctors and engineers, and work together to analyze, problem solve, and communicate to make their mission a success.

## Discovery Dome

Our inflatable dome theater is an exciting experience that offers stars, planets, dinosaurs, volcanoes, tornadoes, DNA, and much more! Each full-dome film or live presentation lasts 30 minutes, and you may choose several presentations in the same visit or combine a show with a tour, an astronomy class, or an Expedition Center mission.

## Astronomy Classes

One-hour daytime astronomy classes include a tour of the George Observatory research telescope. Astronomy classes may be combined with an Expedition Center mission or a Discovery Dome show.

For additional information about our Astronomy Classes, please visit [hmns.org/observatory](https://hmns.org/observatory).

## The George Experience

This is the perfect Field Trip Package for getting your students outdoors and interacting with the environment while gaining knowledge in the areas of astronomy and problem solving! Students can rotate between an Expedition Center mission, astronomy class, Discovery Dome show, or a self-guided scavenger hunt through Creekfield Trail.

## Private Group Stargazing

This interactive program includes stargazing on deck as well as access to the exhibit area. Groups of 30–100 will meet prior to sunset and enjoy a 2-hour customizable experience. The stargazing program takes place on weeknights only.

**\*Open Saturday Nights to the public with advanced ticket purchase.**

**\*Weather Permitting**

To book a field trip to the George Observatory, fill out your booking form online at [hmns.org/book](https://hmns.org/book).

**\*George Observatory in-person programming subject to availability.**

# OUTREACH PROGRAMS



Bring the wonder of HMNS to you, with our exciting Outreach Programs! These programs will engage your students, covering a wide variety of topics from paleontology to astronomy with both in-person and virtual options available this school year. Whether you teach kindergarten or high school, we can adapt our programs to fit your students and their learning needs. Most programs include TEKS-aligned curriculum and all are tailored to grade-specific TEKS objectives. Fill out a booking form online at [hmns.org/bookoutreach](https://hmns.org/bookoutreach) to reserve a program.

## Bugs on Wheels Presentation

Fascinating, hands-on presentations will introduce students to the wonderful world of plants, insects, and other arthropods, with live specimens.

## Wildlife on Wheels Presentation

Students can enjoy a live animal presentation while exploring the basics of animal life.

## Discovery Dome Presentation

A portable dome theatre brings stars, planets, dinosaurs, volcanoes, and more to your school, offering over 40 full-dome immersive films and live presentations for grades PreK-12! Download a brochure with show descriptions and suggested grade levels at [hmns.org/discoverydome](https://hmns.org/discoverydome).

## Earth Science on Wheels Presentation *Supported by Southwestern Energy*

From crystals to claws, and teeth to Triceratops skin, your students will be amazed by the wonders of Earth Science.

## ConocoPhillips Science on Stage

These large-group presentations explore physical science through exciting demonstrations, from discovering the effects of liquid nitrogen to seeing Newton's Laws in action. Suitable for grades 2-12.

## Science Start Presentation

Hands-on, real-world activities focusing on inquiry and experimentation introduce students to fundamental objectives in an easy-to-grasp way, tailored to grades K-2.

## Docents to Go Presentation

A trained Museum docent will visit your school or organization with real Museum artifacts and specimens!

## Choose from the following formats for your outreach program depending on your needs this year!

### IN-PERSON

All topics are available for in-person programs though they are subject to presenter availability. Book early to secure your date!

### LIVE, VIRTUAL

All topics are available for a live virtual presentation by one of our educators or master docents. During this 60-minute virtual presentation, our presenters will showcase museum specimens and/or live animals and answer questions from the students.

### PRE-RECORDED VIRTUAL

Select topics are available as pre-recorded presentations. You'll have 24-hours of access to the presentation to share with your students, so you can watch it anytime. Have questions? Book a live Q&A session with one of our educators or curators as an add-on to your pre-recorded presentation!



# DOCENT TOURS & EARLY INVESTIGATIONS

## GUIDED TOUR OPTIONS

### Docent Tours

To enhance your Field Trip, for an additional fee, school groups can get an exciting, interactive look at our Exhibit Halls by booking a docent tour! Enjoy a tour with specially trained docents who may allow students to access touch carts and provide further knowledge regarding the Museum's collections. Tours are available for each of the Permanent Exhibit Halls and last approximately 45 minutes. Docent Tours require one guide per every 10 people.

### Early Investigations (Grades K-3)

Perfect for younger students ages 4 to 8 years old. During this 1 ½ hour long program, students will handle real artifacts and specimens, take a tour in one of our Permanent Exhibit Halls or Butterfly Center, and participate in educational activities!

In-person programming is subject to availability.

For detailed class descriptions and capacity, visit [hmns.org/earlyinvestigations](https://hmns.org/earlyinvestigations).





# SCIENCE LABS

## Weekday Labs

Our labs allow students to examine ancient objects, investigate technology, meet live animals, or conduct scientific experiments depending on the lab booking. Each lab lasts one hour and includes admission to the Museum's Permanent Exhibit Halls for lab participants on the day of your lab. Labs can accommodate up to 25 students and are held monthly at HMNS and select Thursdays and Fridays at HMNS at Sugar Land.

Themes include Time, Wildlife, Earth Science, Biology, ConocoPhillips TechnoScience, and Dissection.

## Virtual Labs on Demand

Virtual labs provide an hour of educational engagement and hands-on activities for students at home or in the classroom. Choose between pre-recorded or live virtual presentations, depending on your program's and audience's needs, we've got the options you need for any topic or audience.

Virtual labs will provide around an hour of instruction with an HMNS Educator that will be on an online call with the class to teach students about a specific topic, interact with students, lead them in activities, and answer questions.

**\*Virtual Dissection Labs will be dissection demonstrations with the opportunity to engage with the instructor and ask questions.**

## Labs on Demand

With over 100 labs to choose from, Labs on Demand allow you to delve deeper into challenging topics while matching your scope and sequence. Both our standard one-hour labs and our advanced two-hour labs can accommodate up to 25 students per session. Lab fees include admission to the Museum's Permanent Exhibit Halls for lab participants on the day of your lab. A docent tour can be paired with your lab at an additional cost.

Topics include, but are not limited to, Chemistry, Force and Motion, Ancient Egypt, Cells, Paleontology, Organ and whole organism dissections. For more information, visit our website at [hmns.org/labs](http://hmns.org/labs).

All lab pricing can be found on page 3.



[hmns.org/labs](http://hmns.org/labs)

# OTHER UNIQUE STUDENT AND FAMILY PROGRAMS

## Scouts @ HMNS

*Supported by Oxy*

The Museum offers classes and activities at our Hermann Park and Sugar Land locations as well as online that will assist Scouts BSA, Cub Scouts, and Girl Scouts of all ages in earning an array of Badges, Adventures, and patches. Classes are offered virtually and in-person throughout the school year. One-day classes the week of Spring Break and week-long programs are offered over the summer. Ask about Badges on Demand at [scouts@hmns.org](mailto:scouts@hmns.org).

For the latest scout schedule, visit us at [hmns.org/scouts](http://hmns.org/scouts).

## STEM Nova Weekend

October 12, 8:00 - 10:00

Scouts @ HMNS is proud to host our seventh annual STEM Nova Day for Wolves, Bears, Webelos, Scouts BSA, and their families! Bring the excitement of scouts programming at HMNS right into your own home with guest speakers, interactive classes and even a virtual Burke Baker Planetarium show. Sunday afternoon classes will be available to complete the required Adventures for both Nova Awards.

Register early—space is limited.

## GEMS

*Presented by CITGO Petroleum Corporation*

November 2, 9:00 - 12:00

Join us for our annual Girls Exploring Math and Science event, where students and families can learn about science, technology, engineering, and math. Students can also explore careers in fields related to these engaging STEM topics.

Local professionals will be on hand virtually to answer questions about their careers in STEM fields, providing a great opportunity for families to get involved and encourage students to excel in math and science to reach their career goals.

For more information on GEMS, please visit our website at [hmns.org/gems](http://hmns.org/gems).

## Virtual Family Movie Nights at HMNS

Bring the adventure of a museum overnight to your home with this fun, interactive family movie night. Pair this with a viewing of *Night at the Museum*, this bundle is perfect for a night in, a game night, slumber parties, and birthdays. HMNS is just a click away!

## Overnight & Late Night Field Trips for Students

Enjoy a Late Night at HMNS with your students! Complete a Permanent Exhibit Hall scavenger hunt, explore hands-on activities, and see a Burke Baker Planetarium show after the museum closes.

Stay a little later by spending the night at HMNS! After a fun-filled evening of hands-on activities, students will settle down to sleep in one of our halls. Customize your Overnight to include a science lab or on-site Outreach Program to create your own unforgettable Overnight adventure!

For more information about student Late Nights or Overnights, visit our website at [hmns.org/overnights](http://hmns.org/overnights).

## Summer Camps @ HMNS

Summer Camps offer fun experiences for children ages 6–12. These camps will provide educational engagement for your child—from dinosaurs to robotics and space to science magic, every young thinker will be challenged!

For a full list of camp offerings, visit our website at [hmns.org/summercamp](http://hmns.org/summercamp) during the spring of 2024.

## Birthday Parties at HMNS and HMNS at Sugar Land

The Party Smarty birthday party program at HMNS is your one-stop-shop for party planning — from selecting a theme to unique museum activities, we've got you covered. We're more than cake and candles - we make it our mission for your child to have an unforgettable time and to learn something while they're at it! To book your child's next birthday with us, fill out our online booking form at [hmns.org/bookbirthday](http://hmns.org/bookbirthday).

**\*Additional fees may apply for some programs.**

## Office Hours

Have a burning question? Need help with a particular subject area? Just want to talk shop with a museum curator? HMNS offers Office Hours with our educators, docents, and curators.

Available upon request. To schedule Office Hours, email [reservations@hmns.org](mailto:reservations@hmns.org) and submit a request and the reservations staff will contact you shortly to confirm your request.

[hmns.org/education](http://hmns.org/education)



# EDUCATOR RESOURCES & PROFESSIONAL DEVELOPMENT

## Gifted and Talented Staff Development

*Differentiation with the Museum*

*Supported by the PPG Foundation*

Participants will participate in hands-on, interactive activities available for immediate implementation. At the end of the session, educators will earn 6 hours of credit toward the completion of the state-mandated 30 hours of G/T teacher training OR a 6-hour update credit for those who have completed their 30 hours.

Registration for the 2025 workshop will open online in early spring 2025. For more information, visit [hmns.org/GT](https://hmns.org/GT).

## Virtual Teacher Workshops

From the comfort of your own home, earn two hours of CPE credit in this school year's monthly virtual teacher workshops! These subject-based workshops will be taught by HMNS Educators over Zoom.

View our class dates in the monthly calendar or online! Register today at [hmns.org/education/virtual-teacher-workshops](https://hmns.org/education/virtual-teacher-workshops).

## Educator Late Night

During Educator Late Nights you will enjoy the Houston Museum of Natural Science after hours as you participate in an exclusive Late Night experience designed specifically for Educators. In each fun-filled evening, you will work on hands-on activities to use in your classroom, have a catered dinner, and tour exhibits. 6 hours of CPE credit will be awarded to participants at the end of the event. Registration for the Educator Late Nights is restricted to Educators Only.

Visit [hmns.org/workshops](https://hmns.org/workshops) for more information.

## Shell Educators' Preview

*Free for Educators*

Join us twice a year as we showcase our newest exhibition and earn 1 hour of CPE credit during a VIP evening just for educators!

## Excellence in Science Teaching Awards and Student Scholarships

Each year teachers and students in the Houston area are recognized for their exemplary work in the fields of math and science. Annual awards of \$2,000, made possible by The Cockrell Foundation, are given to two teachers and two students and given recognition at HMNS.

Visit [hmns.org/awards](https://hmns.org/awards) for more information.

## Educator Membership

Enjoy all the perks of an HMNS membership along with educator-specific benefits and discounts, including access to virtual content for both you and your students! Your membership supports all of the museum's educational programming.

- Adopt-A-Class
  - An HMNS docent will "adopt" your class, with a weekly, 15-minute virtual check in.
- Virtual Lectures
  - Receive free access to one fall virtual lecture of your choice.
- Additional discounts to HMNS educational programming

To become an Educator Member email [educatormember@hmns.org](mailto:educatormember@hmns.org) and for more information, visit us at [hmns.org/educator-memberships](https://hmns.org/educator-memberships).

For questions about these educator programs, email [educationquestions@hmns.org](mailto:educationquestions@hmns.org).

## Adult Education Programs

Join select Adult Education programs to earn extra continuing professional education (CPE) credit. These programs take place throughout the year.

Visit [hmns.org/adults](https://hmns.org/adults) for more information.

## THANK YOU TO ALL OF OUR EDUCATION SUPPORTERS!

The Houston Museum of Natural Science is exceptionally grateful to the following 2023-24 Partners in Science, whose annual contributions advance our mission to provide world-class exhibitions and science education programming to the Houston community and beyond.

Apache Corporation

Buc-ee's®

Chevron

Kinder Morgan

Shell USA, Inc.

Aramco

CenterPoint Energy

ConocoPhillips

Oxy

Westlake Corporation

British International School of Houston

CITGO Petroleum Corporation

ExxonMobil

Frost Bank

Magnolia Oil & Gas Corporation

Novum Energy

Phillips 66

Tolunay-Wong Engineers, Inc.

Woodforest National Bank

AIG

Houston Safe & Lock

Sempra Infrastructure

Transocean

The Friedkin Group

PPG Foundation

Southwestern Energy

Bank of America

Mitsubishi Corporation (Americas)

H-E-B

Union Pacific Foundation

Marathon Oil Corporation

Amegy Bank

Morgan Stanley



[hmns.org/education](https://hmns.org/education)



NON-PROFIT ORG.  
U.S. POSTAGE  
PAID  
PERMIT NO. 6371  
HOUSTON, TX

# HOUSTON MUSEUM *of* NATURAL SCIENCE

**Houston Museum of Natural Science**

5555 Hermann Park Drive  
Houston, Texas 77030

**Houston Museum of Natural Science  
at Sugar Land**

13016 University Blvd  
Sugar Land, Texas 77479

**George Observatory**

21901 FM 762  
Needville, Texas 77461

## OUR MISSION

The mission of the Houston Museum of Natural Science shall be to preserve and advance the general knowledge of natural science; to enhance in individuals the knowledge of and delight in natural science and related subjects; and to maintain and promote a museum of the first class.